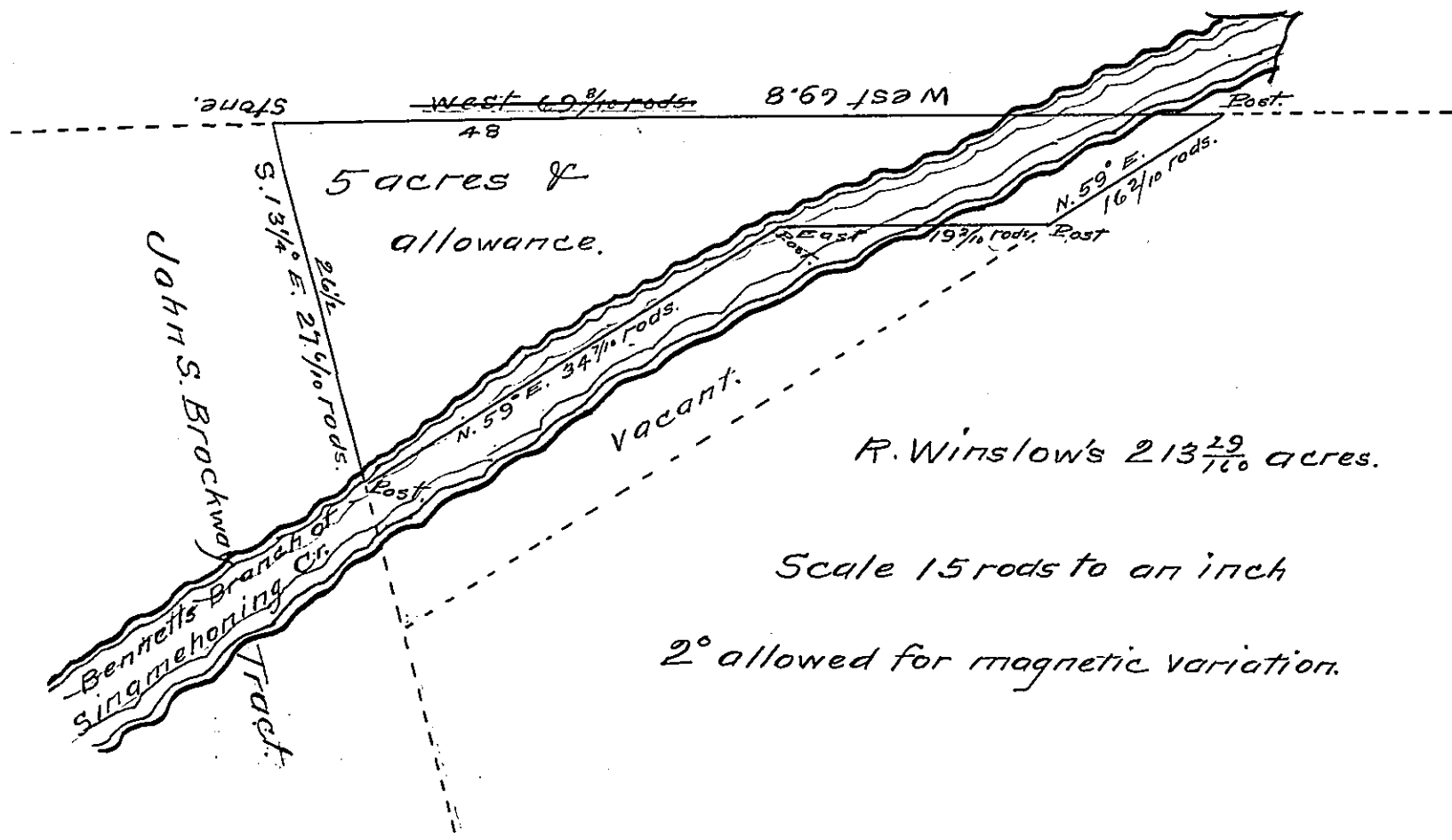


No. 5025.  
Geo. Mead.



SURVEYED for Reuben Winslow, the above tract of Land situated on Bennett's Branch of the Sinamehonng, - in Benezet Township in the County of Elk, Containing five acres and the usual allowance of six per cent, the 16<sup>th</sup> day of November 1847 in pursuance of a Warrant dated October 30<sup>th</sup> 1847.

B. P. Little Dept. Surveyor.

To John Laporte Surv. Gen.

IN TESTIMONY that the above is a copy of the original remaining on file in the Department of Internal Affairs of Pennsylvania, made conformably to an Act of Assembly approved the 16th day of February, 1833, I have hereunto set my Hand and caused the Seal of said Department to be affixed at Harrisburg, this Twenty seventh day of August 1907.

Henry H. H. H.  
Secretary of Internal Affairs.